

# Release Notes

## HARVEY® RC Firmware

### Version 2.6.0

#### IMPROVEMENTS

- ✓ Improve discovery of RC modules in the network by sending IGMP membership reports. This helps to work around issues of RCs showing up only shortly with yellow state in HARVEY Composer.

Consider the following notes on IP multicasting to ensure your network configuration is allowing device discovery to work reliably.

#### Notes on IP multicasting:

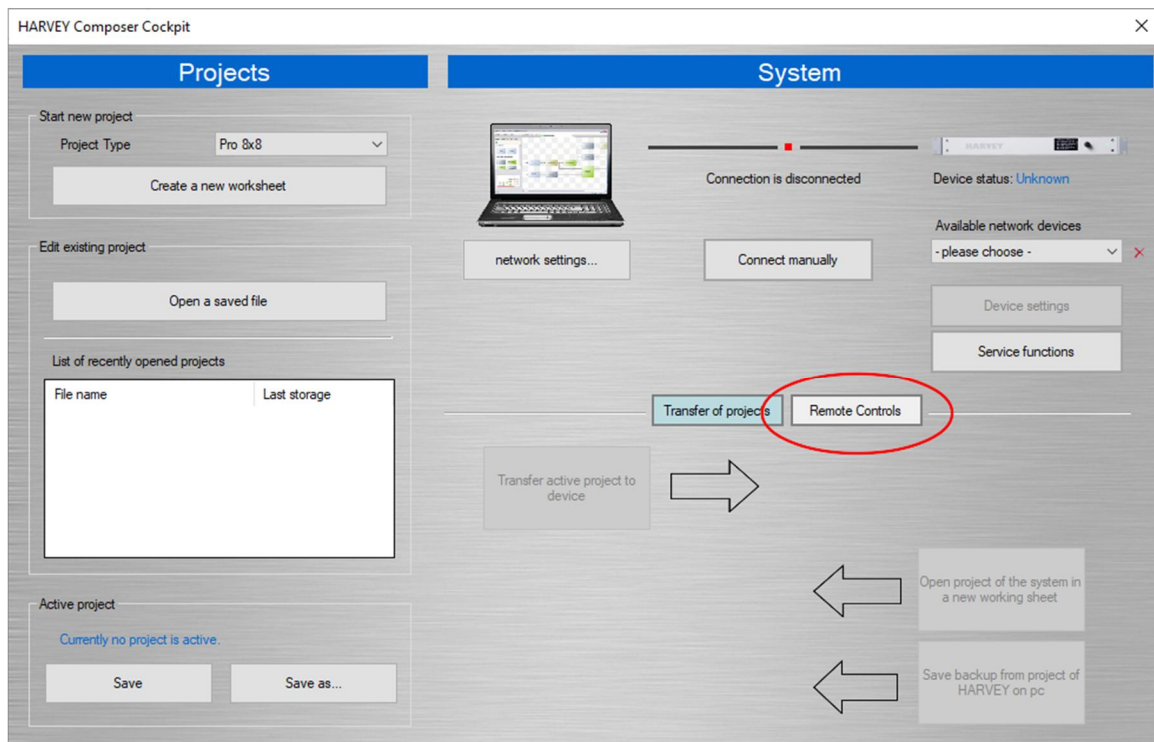
- The HARVEY system uses IP multicast messages to discover members of the ecosystem in the local network. That is the standard method for device discovery used by most manufacturers of network devices.
- While IP multicast was originally designed to deliver messages to all hosts in a local network, many modern network switches implement IGMP Snooping to optimize the message flow. That may cause all sorts of problems when the network configuration is not prepared for it.
- Sending IGMP membership reports is one of the necessary measures to make IGMP Snooping work. That's what HARVEY RC modules will do starting with firmware version 2.6.0.
- Important: For IGMP snooping to work reliably, it is required to have an IGMP querier active in the network. That function can be enabled with many managed network switches or routers. Best practice is to enable the core switch as IGMP querier. The IGMP querier will send frequent queries into the network causing multicast participants to report their group memberships.
- Alternatively: most managed switches can be configured to disable IGMP Snooping and not block "unknown" multicast messages.

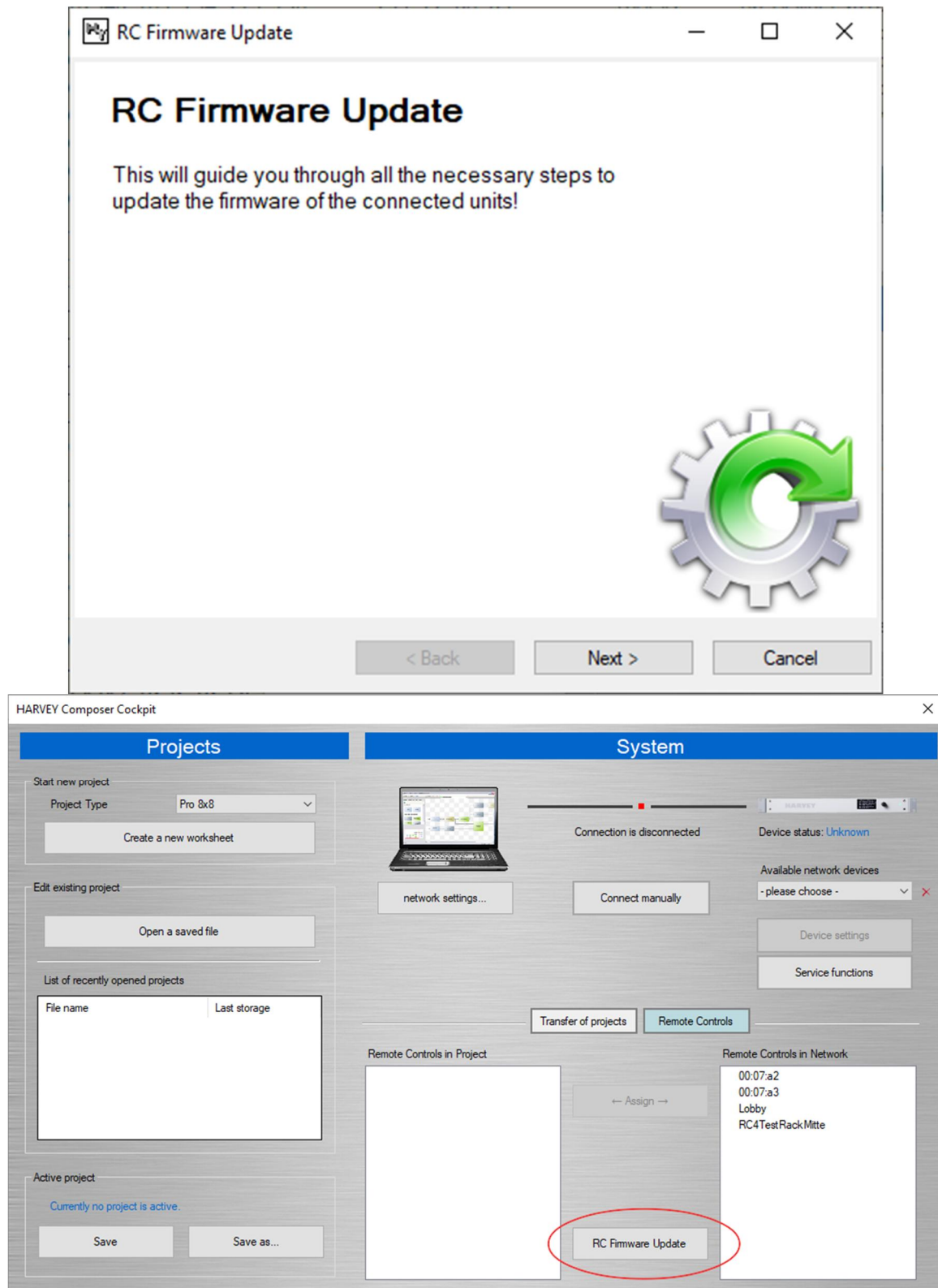
## Notes on updates, when the RC is barely available

- in case the RC only shows up shortly with yellow state in Composer the update process will need some patience
- if you could power cycle the RC while being at the PC where Composer is running, it will speed up the process
- the RC reaches yellow state about every 5 minutes
- when you reached point 6 of the following install guide, where you see the Updateable Devices window, you need to keep an eye on that screen
- the moment the RC pop ups there, mark the checkbox and hit the Start Update button
- in the rare case it fails, can happen if the update request comes too late during yellow phase, retry it next time (or do another power cycle)

## How to install the RC4 / RC12 firmware update

1. Download the .rc4 or .rc12 firmware package from the HARVEY webpage.
2. Open HARVEY Composer and go the Remote Controls in the Cockpit:





3. Select RC Firmware Update:
4. Then the Firmware Update Dialog opens, select Next:

5. Click on the Folder Icon to find the .rc4 or .rc12 firmware file and then select Next:
6. All RCs in the local network that match the firmware type will be displayed and can be selected for updating. Multiple devices can be updated simultaneously. Once the selection is complete, select Start Update

**RC Firmware Update**

### Updateable Devices

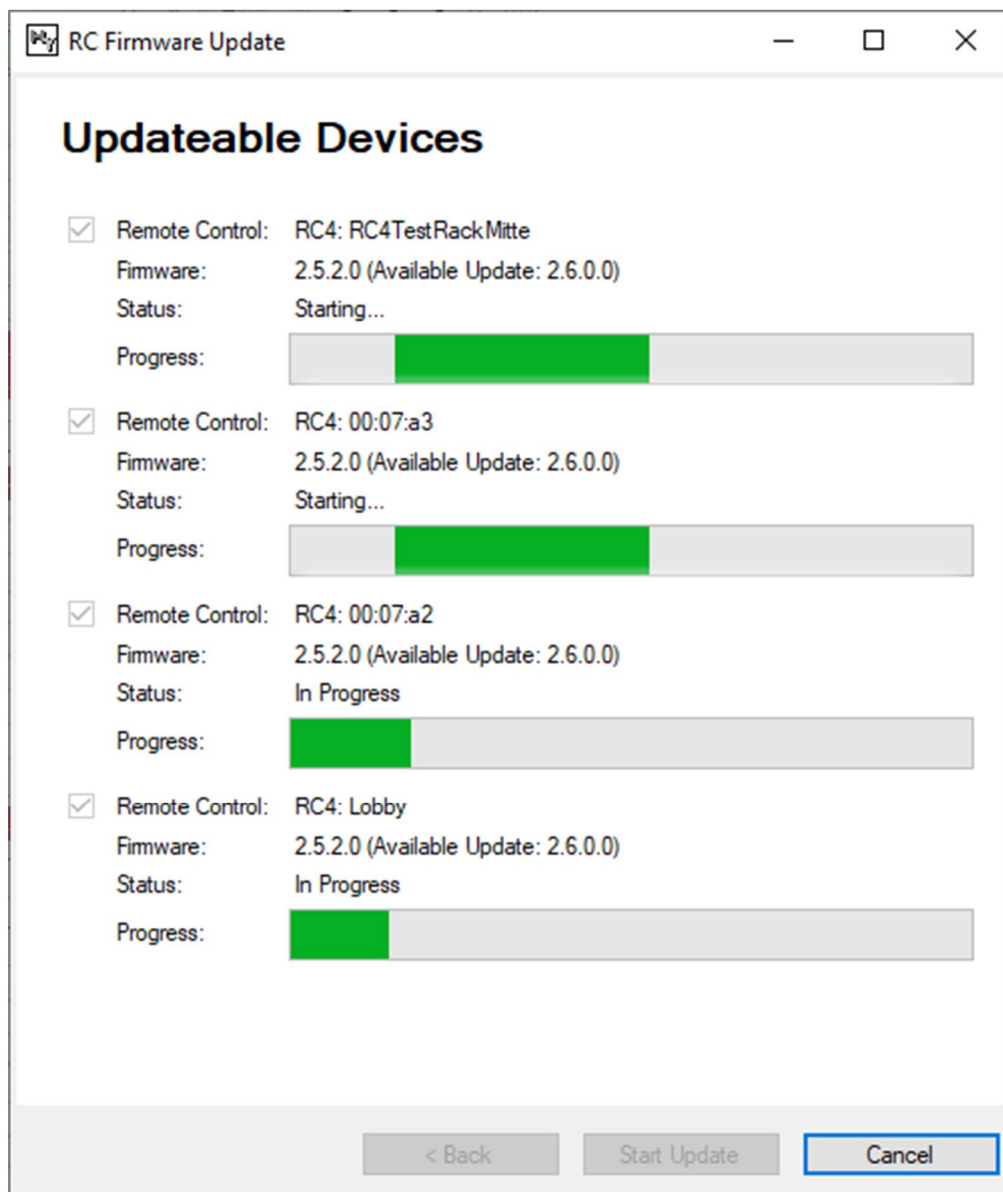
<input type="checkbox"/>	Remote Control: RC4: 00:07:a3
	Firmware: 2.6.0.0 (Available Update: 2.6.0.0)
	Status:
	Progress: <div></div>
<input type="checkbox"/>	Remote Control: RC4: 00:06:d0
	Firmware: 2.6.0.0 (Available Update: 2.6.0.0)
	Status:
	Progress: <div></div>
<input type="checkbox"/>	Remote Control: RC4: Lobby
	Firmware: 2.6.0.0 (Available Update: 2.6.0.0)
	Status:
	Progress: <div></div>
<input type="checkbox"/>	Remote Control: RC4: 00:07:a2
	Firmware: 2.6.0.0 (Available Update: 2.6.0.0)
	Status:
	Progress: <div></div>
<input type="checkbox"/>	Remote Control: RC4: RC4TestRackMitte
	Firmware: 2.6.0.0 (Available Update: 2.6.0.0)
	Status:
	Progress: <div></div>

< Back   Start Update   Cancel



< Back   Next >   Cancel

7. The update progress is displayed:



8. Once all selected updates are complete, the window can be closed by selecting Finish. The RCs will then be ready with the new firmware.